

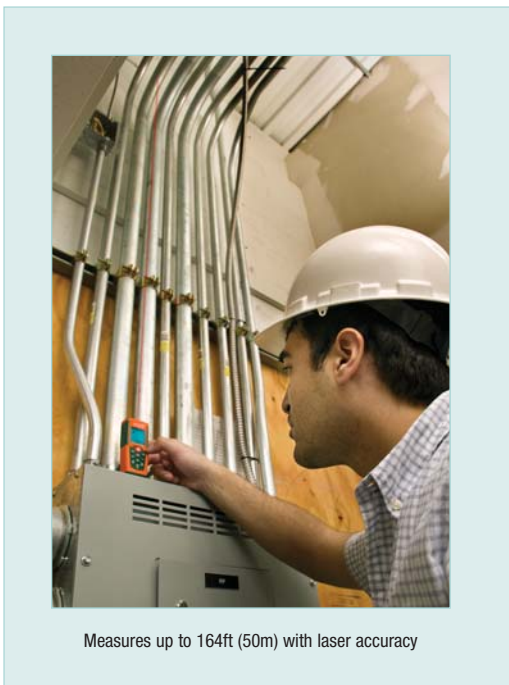
Laser Distance Meter

Laser measurement accurate to 0.06 inches

With Historical Storage that recalls the previous 20 records (measured or calculated results)

Features:

- Measures from 2" to 164' (0.05 to 50m)
- Automatically calculates Area and Volume
- Indirect measurement using Pythagorean theorem
- Continuous measurement function with Min/Max distance tracking updates every 0.5 seconds
- Addition/Subtraction
- Front or rear edge reference
- Low battery indicator
- Double molded housing (IP54)
- Auto power off
- Complete with carrying case and 2 AAA batteries



Measures up to 164ft (50m) with laser accuracy

Specifications	
Measurement Range	2" to 164' (0.05 to 50m)
Accuracy (up to 32'/10m)	±0.06" (±1.5mm)
Resolution	0.001" (0.001m)
Length Add calculation	99'11" (99.99m)
Area calculation	999.99 sq. ft. (999.99m ²)
Volume calculation	999.99 cu. ft. (999.99m ³)
Laser Power Off	after 30 seconds
Auto Power Off	after 3 minutes
Power Supply	2 AAA Batteries
Dimensions	4.5 x 1.9 x 1.1" (115 x 48 x 28mm)
Weight	5.3oz (150g)

Ordering Information:

DT300Laser Distance Meter



GLOBAL CONTROL C.A.
Av. Bolivar Norte C.C. Camoruco
Piso 15 Ofic 15-8 Valencia
Telf. 0241-8244157 /8212318
email: info@globalcontrol.com.ve
www.globalcontrol.com.ve

